



ADVANCED BRAIDED RETRACTION CORD



The Retraction Cord That Stays Where You Place It

Packing retraction cord should be a simple step with predictable results. Too often, it's tedious and frustrating. Why? Today's retraction cords are difficult to handle: the first half of the packed cord often pops out of the sulcus during placement of the remaining half. Additionally, you may find the cord frays when cut, reducing its ability to move tissue effectively.

FIRST STRING™ is a unique, 100% cotton braided retraction cord that features a tight weave for easy handling. Unlike many cords, non-impregnated FIRST STRING holds its shape as you manipulate it throughout the placement procedure, maximizing tissue retraction. FIRST STRING gives you superior tactile feel to ensure you do not disrupt the connective tissue fibres, which in turn ensures the prevention of gingival recession and biological width impingement.

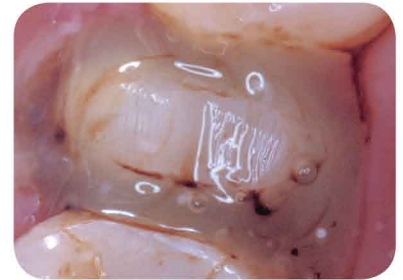
To further eliminate the "frustration factor" that comes with most cords, FIRST STRING strands simply will not separate, nor will they fray when cut. Furthermore, you won't risk penetrating the cord or seizing strands with your packing instrument.

FIRST STRING is available in four sizes: XS, S, M, and L. In fact, XS is one of dentistry's thinnest retraction cords.

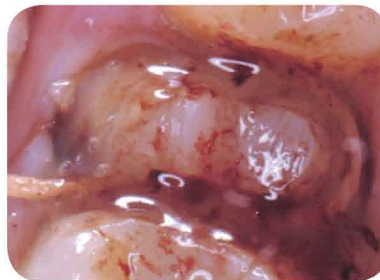
Placing Retraction Cord and Controlling Bleeding



1. If bleeding is excessive following tooth preparation, syringe Tissue Goo to the bleeding site. Apply pressure (do not rub!) to the site with a Multi-Brush or a small cotton pellet until the bleeding is arrested. Rinse the prepared tooth.



2. Apply Tissue Goo around the gingival margin of the entire preparation.

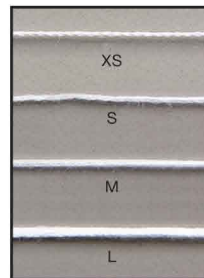


3. Pack First String Retraction Cord through the syringed Tissue Goo using either a single or double cord technique. If bleeding occurs, rinse and dry the site, then place additional Tissue Goo over the packed retraction cord.



4. Hemostasis is achieved without damage to the soft tissue.

Dentistry and photography courtesy of Dr. Robert Mergans



FIRST STRING Retraction Cord shown at actual size.

Retraction Cord Size Approximate Conversion Chart					
CLINICIAN'S CHOICE	FIRST STRING	XS	S	M	L
Ultradent	Ultrapak Cord	000	00	2	3
Pascal	Sil-Trax	7	8	9	10
Gingi-Pak	Soft Twist	N/A	1*	2	3

*Gingi-Pak is mid-range between FIRST STRING S and M. Ultrapak Cord is a registered trademark of Ultradent. Sil-Trax is a registered trademark of Pascal. Soft Twist is a registered trademark of Gingi-Pak.

100" of retraction cord in bottle dispenser

640107 XS
640108 S
640109 M
640110 L

CLINICIAN'S CHOICE
DENTAL PRODUCTS INC.

designed for better dentistry

BACKED BY OUR TRY-IT GUARANTEE We guarantee you'll love First String, or return it within 30 days for a full refund!

1-800-265-3444
www.clinicianschoice.com