

nano-enhanced *Evanesce*TM universal restorative

from **CLINICIAN'S CHOICE**
DENTAL PRODUCTS, INC.

RESTORATIVE

COMPOSITES



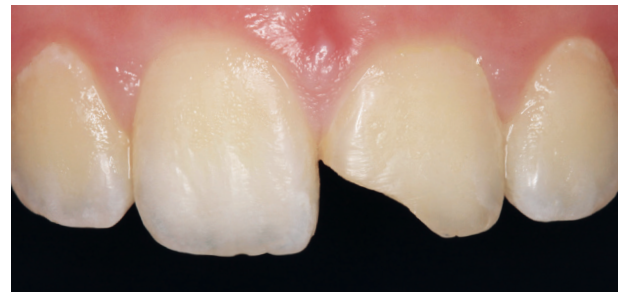
For Restorations That Disappear

All-new **EVANESCE**TM Nano-Enhanced composite from **CLINICIAN'S CHOICE**[®] is designed for both simple and complex cases. To **EVANESCE** means to disappear gradually; vanish; fade away. True to its name, **EVANESCE** composite blends effortlessly with natural dentition. Formulated with a proprietary process to optimize the refractive index of its unique nano pigments and fillers, you'll be amazed with its polishability and its ability to disappear or what we call it "evanesce effect". Truly amazing esthetics can be easily achieved with **EVANESCE** and its simple technique often requires only a single shade or, in more complex cases, fewer layers of composite.

Beyond beautiful esthetics, **EVANESCE** exhibits putty-like handling. With the assistance of rheological modifiers, **EVANESCE** adapts during placement and manipulation, yet is absolutely slump-free when you take your instrument or brush away, holding its form until you polymerize. Now you can build the most detailed anatomy or place the thinnest layers, for an infinity edge, with ease.

Truly a universal composite for both anterior and posterior cases, **EVANESCE** is strong, has low shrinkage (2%), and packs beautifully into Class I and II preparations. **EVANESCE** is available in multiple VITA shades with three opacity options: Enamel, Universal and Dentin. To further enhance esthetic enamel characterization, we've developed three "Enamel FX" Shades: White, Incisal and Clear, as well as two bleach shades.

Now You See It... Now You Don't



Dentistry and photography courtesy of Dr. Daniele Larose.

UNIVERSAL SHADES (85% Opacity)												
A1	A2	A3	A3.5	A4*	B1	B2	C1*	C2	C3*	BL1*	BL3*	
DENTIN SHADES (90% Opacity)												
	A1	A2	A3	A3.5	B1	C2	C4*					
ENAMEL SHADES (80% Opacity)												
	A1	A2	A3	A3.5	B1	B2*	C2					
ENAMEL FX SHADES												
ENAMEL Incisal			ENAMEL White				ENAMEL Clear					

4g syringes or 0.25g single dose
*Available in single dose only

SYRINGES

# 321501	A1 Universal	4g syringe
# 321502	A2 Universal	4g syringe
# 321503	A3 Universal	4g syringe
# 321504	A3.5 Universal	4g syringe
# 321505	B1 Universal	4g syringe
# 321522	B2 Universal	4g syringe
# 321506	C2 Universal	4g syringe
# 321507	A1 Enamel	4g syringe
# 321508	A2 Enamel	4g syringe
# 321509	A3 Enamel	4g syringe
# 321510	A3.5 Enamel	4g syringe
# 321511	B1 Enamel	4g syringe
# 321512	C2 Enamel	4g syringe
# 321516	A1 Dentin	4g syringe
# 321517	A2 Dentin	4g syringe
# 321518	A3 Dentin	4g syringe
# 321519	A3.5 Dentin	4g syringe
# 321520	B1 Dentin	4g syringe
# 321521	C2 Dentin	4g syringe
# 321515	Enamel Incisal	4g syringe
# 321514	Enamel White	3g syringe
# 321513	Enamel Clear	3g syringe

SINGLE DOSE - 0.25g each

# 322501	A1 Universal	20/Pk
# 322502	A2 Universal	20/Pk
# 322503	A3 Universal	20/Pk
# 322504	A3.5 Universal	20/Pk
# 322505	A4 Universal	10/Pk
# 322506	B1 Universal	20/Pk
# 322507	B2 Universal	10/Pk
# 322508	C1 Universal	10/Pk
# 322509	C2 Universal	20/Pk
# 322510	C3 Universal	10/Pk
# 322511	BL1 Universal	10/Pk
# 322513	BL3 Universal	10/Pk
# 322514	A1 Enamel	10/Pk
# 322515	A2 Enamel	10/Pk
# 322516	A3 Enamel	10/Pk
# 322517	A3.5 Enamel	10/Pk
# 322518	B1 Enamel	10/Pk
# 322519	B2 Enamel	10/Pk
# 322520	A1 Dentin	10/Pk
# 322521	A2 Dentin	10/Pk
# 322522	A3 Dentin	10/Pk
# 322523	A3.5 Dentin	10/Pk
# 322524	B1 Dentin	10/Pk
# 322525	C2 Dentin	10/Pk
# 322526	C4 Dentin	10/Pk

SYRINGE TRIAL KIT

325901 Contains: 5 x 4g syringes in Universal shades: A1, A2, A3, A3.5, B1

SINGLE DOSE TRIAL KIT

325902 Contains: 5 x 0.25g single dose 10-packs in Universal shades: A1, A2, A3, A3.5, B1



TEACHING BETTER DENTISTRY

1-800-265-3444
clinicalresearchdental.com